

These instructions provide important information for the safe use and maintenance of the Bodypoint Evoflex™ Pelvic Stabilizer. Give these instructions to the user or their caregiver and review them to ensure that they are understood.

⚠ WARNING! Product should be installed and fitted by a qualified rehab technician.

USE:

⚠ WARNING! This product should only be used for positioning a person in a wheelchair. It is NOT intended for use as a transportation safety device, as a personal restraint device, or in any other application where its failure could result in injury. Misuse of this product is unauthorized and unsafe.

⚠ WARNING! This pelvic stabilizer must be worn tightly fitted across the lower pelvis or thighs at all times. A loose belt can allow the user to slip down and create a risk of strangulation. Have your seating specialist demonstrate its proper adjustment and use.

⚠ WARNING! Accidental release of this pelvic stabilizer can allow the user to slip down or fall from the wheelchair. If the user's movements or cognitive abilities could lead to accidental release, a caregiver must be present at all times during its use. Ensure that all caregivers know how to unfasten the product. Failure to do so may delay release in an emergency.

⚠ WARNING! As with any new seating support, this product may change the way a person sits. Users must continue to practice regular pressure relief activities and skin integrity checks, not only where this product contacts the user, but also in primary pressure-bearing areas such as the sacrum, legs, and buttocks. If increased skin redness or irritation occurs, discontinue use and consult your physician or seating specialist. Failure to do so may result in serious injury, such as pressure ulcers.

MAINTENANCE: Check periodically for signs of wear in the stitching, webbing, and pads. If significant wear is found, contact your supplier for qualified repair or replacement by Bodypoint. Under no circumstance should this product be altered or repaired by unqualified persons—health and safety depend on it!

🧼🌀🧺🧻 CLEANING: Machine wash, warm, 40°C (100°F). Do not bleach. Tumble dry, low temperature, or drip dry. Do not iron. (Placing the product inside a cloth bag during washing helps prevent scratches to the product and the machine.)

ATTENTION: WARRANTY AGAINST DEFECTS

A copy of this warranty is also available at www.seatingdynamics.com.au.
Warranty period: 12 months limited.

1. Seating Dynamics Pty Ltd ABN 21 086 494 117 ("SDL") undertakes to the end purchaser (the "Customer") that the Products will be free of faults arising from defects in Workmanship or Materials for the duration of the Warranty Period on the terms and conditions set out in this Warranty.
2. In this Warranty the following definitions apply:
 - a. Form means a warranty claim form issued by Seating Dynamics Pty Ltd in respect of the Products.
 - b. Products means the goods distributed or sold by SDL set out in the table above.
 - c. Material means a material or component used by the manufacturer in the manufacture of Products distributed and/or sold by SDL.
 - d. Retailer means the authorised dealer of Products from whom the Customer purchased the Product.
 - e. Warranty Period means the warranty period set out in the table above, commencing from the date of purchase of the Product by the Customer.
 - f. Workmanship means the handling, assembly and manufacturing processes performed by or on behalf of SDL in order to manufacture the Products.
3. SDL undertakes that if the Customer wants to make a claim during the Warranty Period for any Product, or any part of a Product that has failed to operate correctly as a result of faulty Workmanship or defective Material, SDL will subject to this Warranty, repair or replace the Product or part (as the case may be) free of charge (excluding freight costs) to the Customer as long as the following conditions are met:
 - a. The Customer must contact the Retailer or SDL (whose contact details are located at the bottom of this Warranty), as soon as the Customer becomes aware of any defect in the Product. The Customer will be required to complete a Form and provide to SDL satisfactory proof of the date of purchase of the Product;
 - b. SDL will review the Form and determine whether there is a defect;

- c. If SDL requests the return of the applicable Product or part, the Customer will be responsible for the collection and freight costs of returning that Product or part to SDL; and
 - d. The Customer must pay all applicable freight costs when claiming under this warranty.
4. If the Product or part (as the case may be) is repaired or replaced during the Warranty Period, this Warranty remains based on the original date of purchase.
 5. The benefits given to the Customer in this Warranty are in addition to any other rights or remedies under a law in relation to the Products to which the Warranty applies.
 6. This Warranty does not extend to damage to Products which occurs during transit/transportation, or loading/unloading before or after transit/transportation, or which is caused by any abuse, accident or improper installation, connection, use, adjustment or repair or use of goods otherwise than in accordance with instructions issued by SDL.
 7. To the extent permitted by law, the warranty on Products is waived if any addition or attachment to the Products does not have SDL's approval or are not sold as SDL Products. The Products are designed to perform specific tasks under established test loads and unauthorised attachments may produce stresses for which the design is not appropriate.
 8. The following applies to Customers who purchased the Product in Australia: In the following paragraph "goods" means "Products" and "you" means the "Customer".

Our goods come with guarantees that cannot be excluded under the Australian Consumer Law. You are entitled to a replacement or refund for a major failure and compensation for any other reasonably foreseeable loss or damage. You are also entitled to have the goods repaired or replaced if the goods fail to be of acceptable quality and the failure does not amount to a major failure.

9. Notwithstanding the preceding paragraph, the liability of SDL for a breach of a consumer guarantee or any warranty made under these Warranty terms for any Products not of a kind ordinarily acquired for personal, domestic or household use is limited, to the extent permissible by law and at the option of SDL in relation to the Products supplied, to:
 - a. The replacement of the Products or the supply of equivalent Products;
 - b. The repair of the Products;
 - c. The payment of the cost of replacing the Products or of acquiring equivalent Products; or
 - d. The payment of the costs of having the Products repaired.
10. To the extent permitted by law, all other warranties whether implied or otherwise that are not set out in this Warranty are excluded and SDL shall be under no liability in contract, tort (including without limitation, negligence or breach of statutory duty) or otherwise to compensate the Customer for:
 - a. Increased costs or expenses;
 - b. Any loss of profit, revenue, business, contracts or anticipated savings;
 - c. Any loss or expense resulting from a claim by a third party; or
 - d. Any special, indirect or consequential losses or damage of any nature whatsoever caused by SDL's failure to complete or delay in completing the order to deliver the Products.
11. This Warranty is not applicable outside Australia.



CONTACT INFORMATION

Glen Curtin
Seating Dynamics Pty Ltd, Unit 3, 19 Boden Rd, Seven Hills,
NSW 2147
Telephone: +61 2 9620 7839, Facsimile: +61 2 9012
0087,
Email: info@seatingdynamics.com.au

For more information on Bodypoint products, and a list of distributors outside the USA go to www.bodypoint.com.

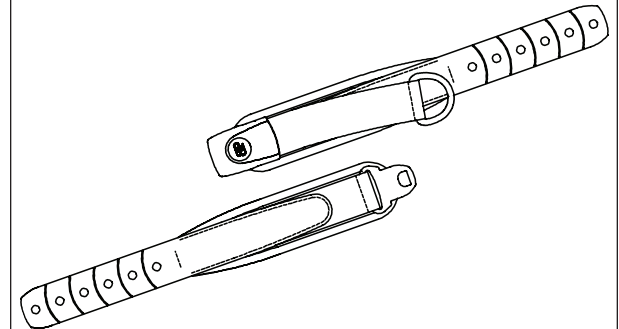


MDS5 GmbH
Schiffgraben 41
D-30175 Hannover
Germany



EVOFLEX™ PELVIC STABILIZER

Installation and User's Instructions



ART NOS. EB205, EB225, EB235

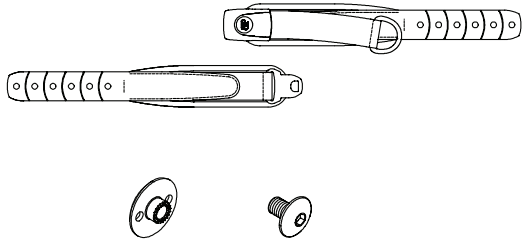


Bodypoint®

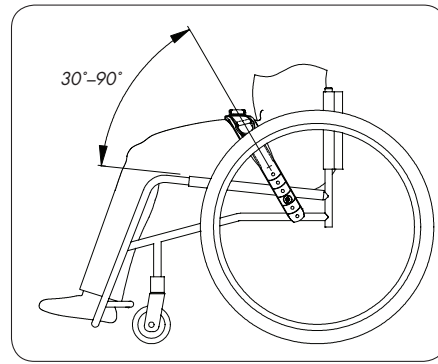
558 First Ave. South, Suite 300 | Seattle, WA 98104
206.405.4555 | 800.547.5716

www.bodypoint.com | email: info@bodypoint.com

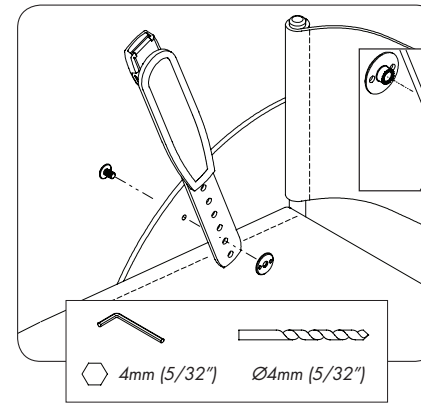
BPI092-au 2012.2



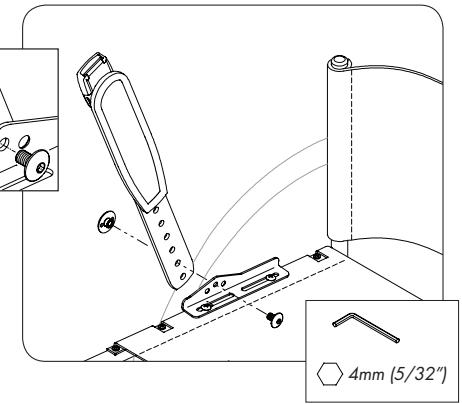
PACKAGE CONTENTS
 Evoflex™ Belt Stabilizer
 M6 x 8 screw
 M6 Low-profile flange nut



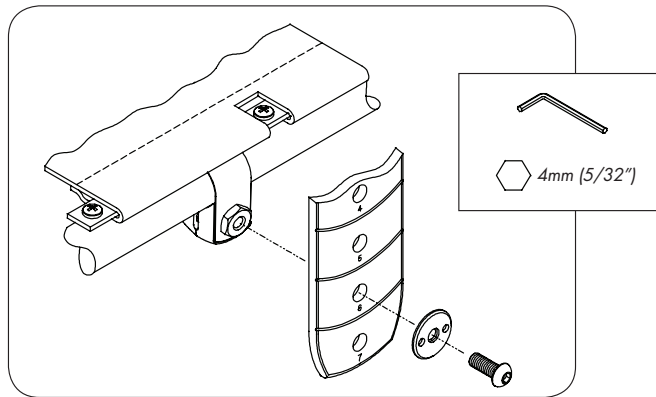
BELT POSITION
 The recommended belt angle is 30°-90° from the seat, according to the positioning needs of the user. Determine the best position for the belt and, with the adjustment strap fully tightened, locate the desired anchor points, then select from the mounting methods shown.



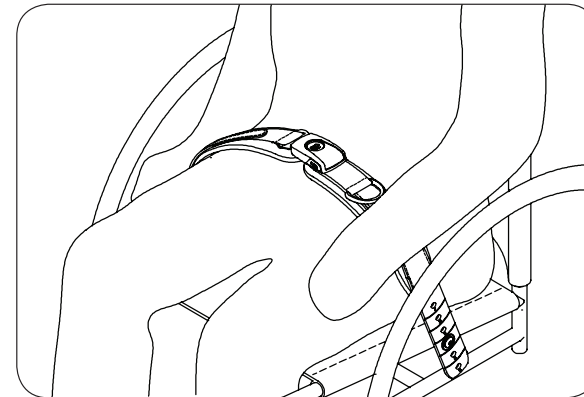
SIDE GUARD MOUNTING
 Drill 6mm (1/4") hole or use existing hole/slot to attach belt using included fasteners.



SEAT TUBE MOUNTING
 (Requires Art. No. HW312-KIT)
 Attach mounting bracket to seat tube. Attach belt using included fasteners through middle hole of HW312 mounting bracket.



BAND CLAMP MOUNTING
 (Requires Art. No. HW320) Attach band clamp to seat tube. Attach belt using the M6 X 12 screw included with the HW320 band clamp.



ADJUSTMENT
 When properly adjusted and the belt tightened, it should fit snug so that the user's pelvis is secure. Tighten the D-ring pull until all slack is removed and the pads under the buckle are touching. If length adjustment is necessary to achieve a good fit or to remove the product for cleaning, this can be done at the end straps.

SAFETY CHECK
 When properly positioned in wheelchair, have user lean forward and side to side to check fit. Check for:

1. Normal operation of buckle and adjustment straps.
2. **Comfort** Look for areas of irritation.
3. **Position** If too high or too low, adjust anchor points.
4. **Interference with other devices** Relocate anchor points as necessary.
5. Move chair through full range of motion, including tilt, folding, and rolling. Check for any interference.

These instructions provide important information for the safe use and maintenance of Bodypoint EvoFlex Pelvic Support Belts. Give these instructions to the user or their caregiver and review them to ensure that they are understood.